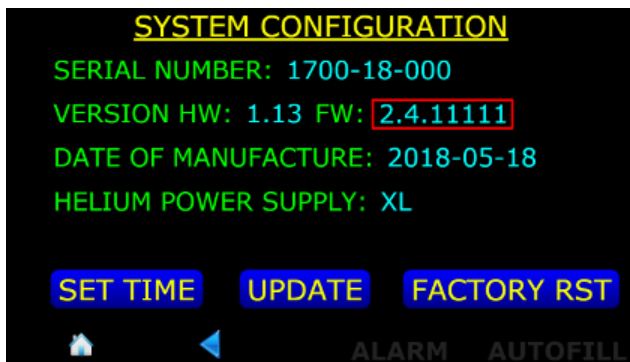
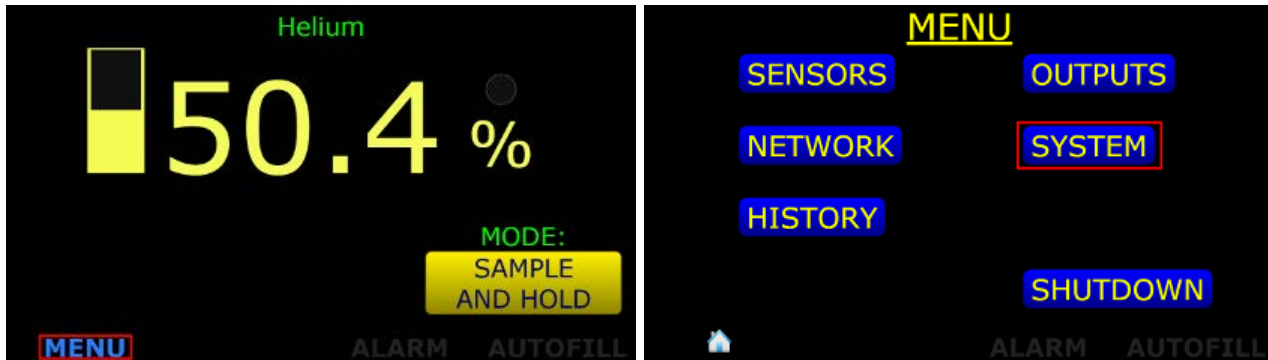


# Model 1700 Firmware Update Procedure

14 June 2018

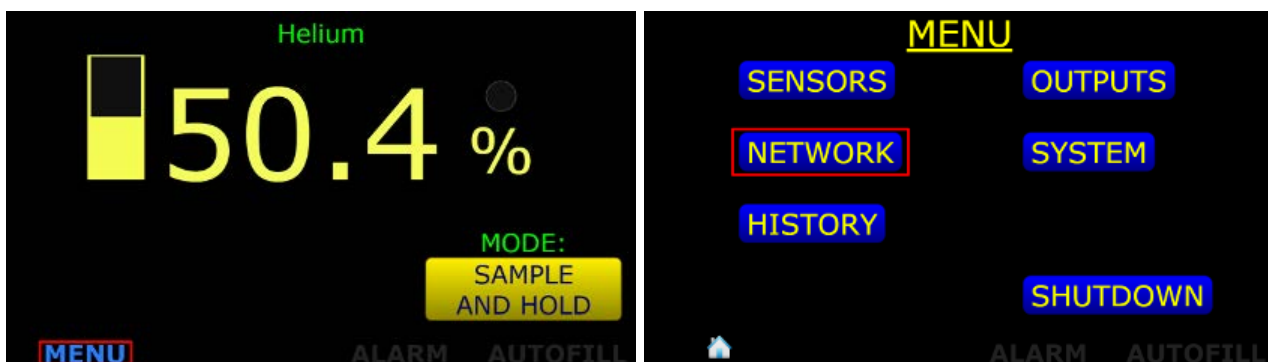
## Checking Firmware Version

1. To check the firmware version on the AMI Model 1700, press MENU > SYSTEM.



## Updating Firmware

1. Get the IP Address of the unit by pressing MENU > NETWORK.



## NETWORK CONFIGURATION

DYNAMIC ADDRESS: 192.168.0.87

NETMASK: 255.255.255.0

GATEWAY: 192.168.0.254

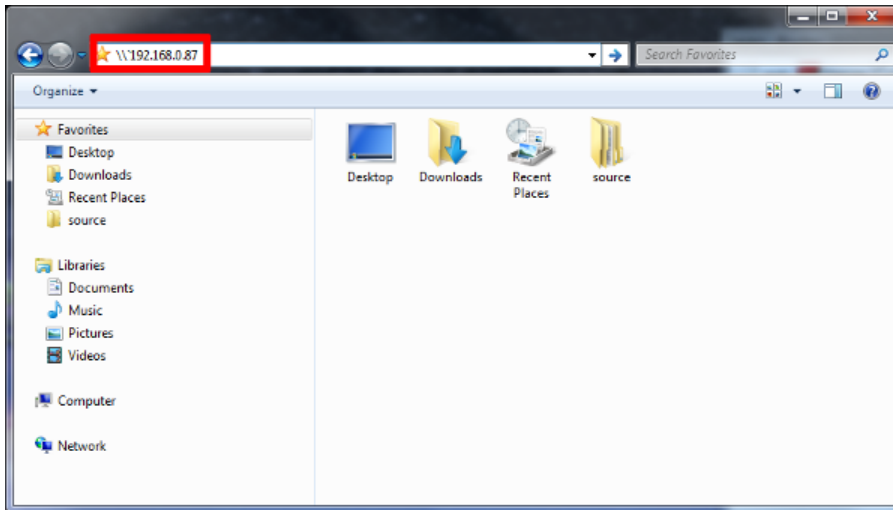
WORKGROUP: homegroup

MAC ADDRESS: 00:D0:69:4E:7B:D4

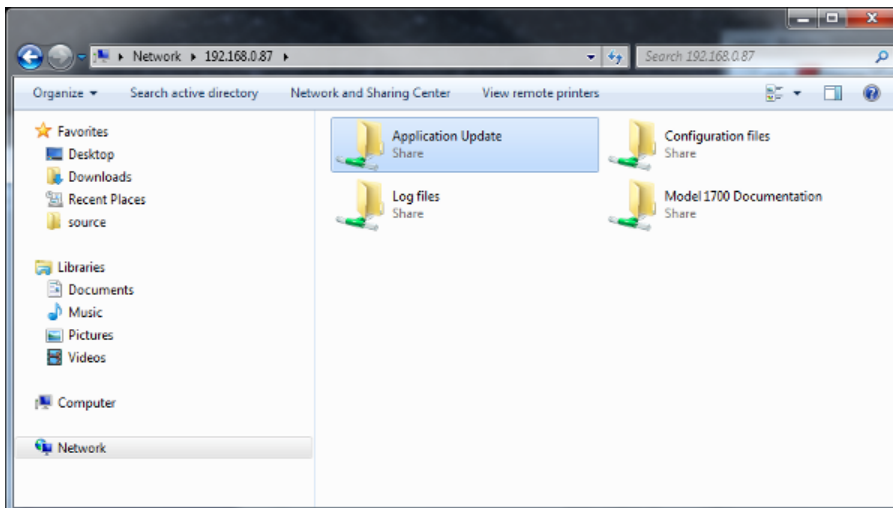
HOSTNAME: M1700-xxx

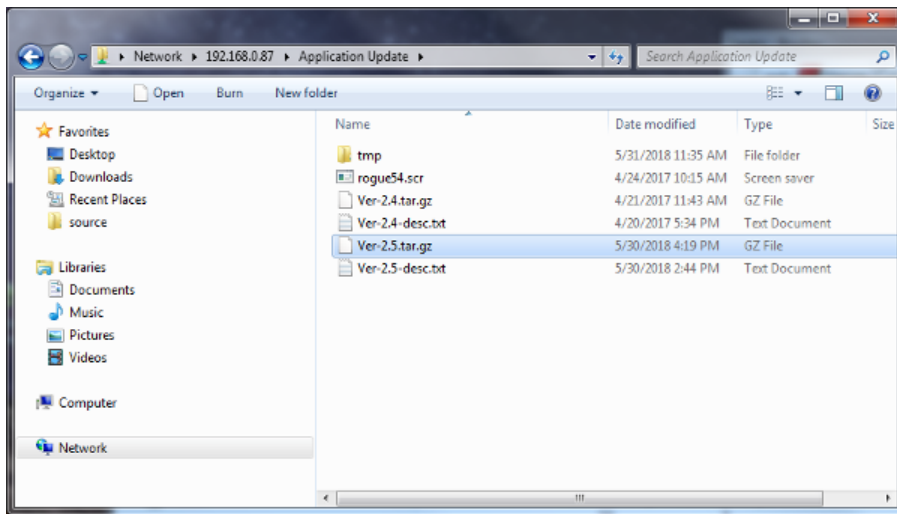
EDIT

- Using Windows Explorer navigate to \\IP\_ADDRESS e.g. (\\192.168.0.87).

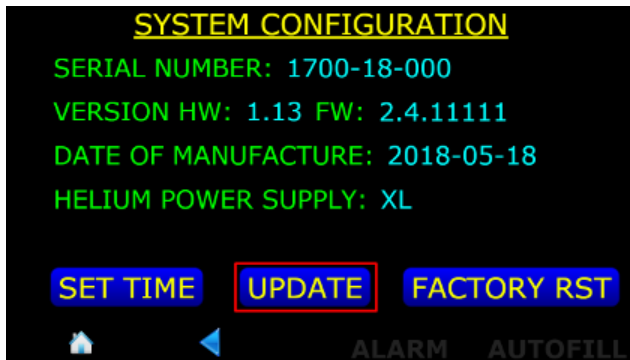
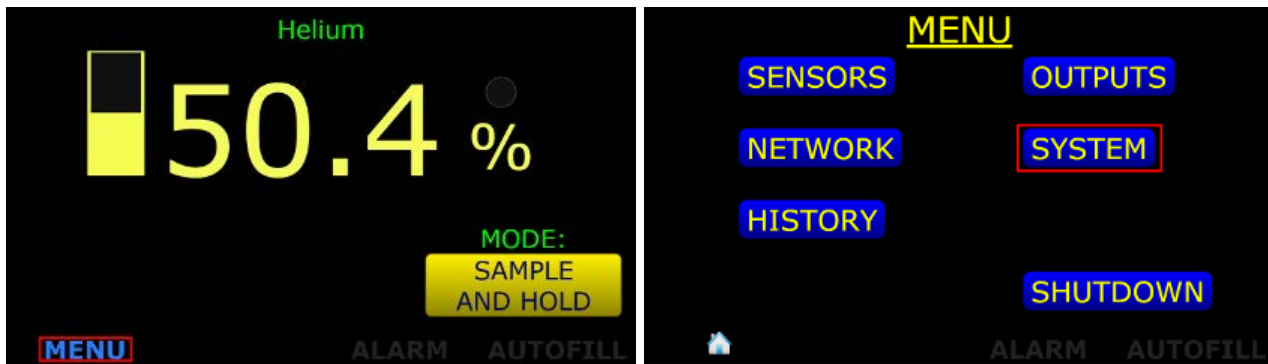


- Copy the two update files (\*.tar.gz and \*-desc.txt) to the Application Update folder.

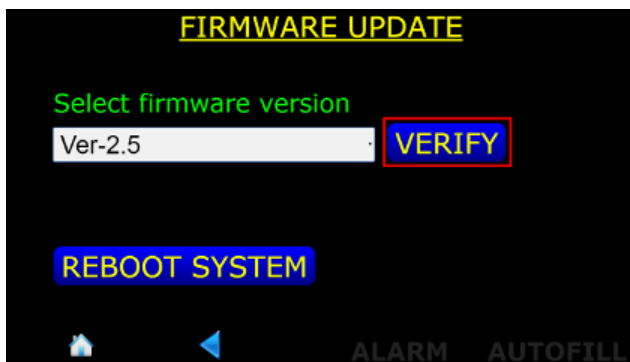




5. Go to MENU > SYSTEM > UPDATE.



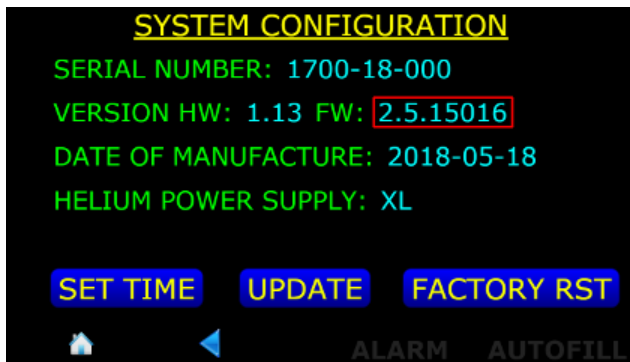
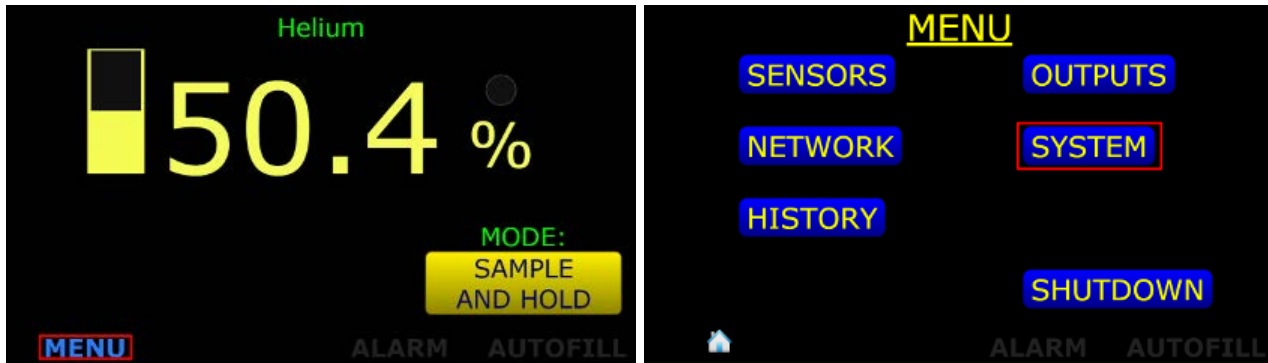
6. Ensure the proper firmware version is selected and press VERIFY.



7. Double-check that the correct firmware version is to be installed and press INSTALL.



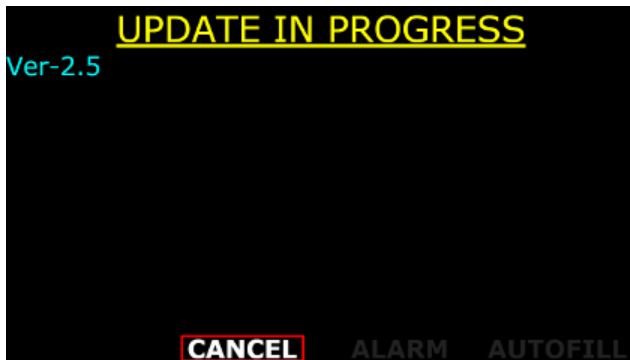
- After installation the unit should reboot itself. Once rebooted, check MENU > SYSTEM to ensure the version has been updated.



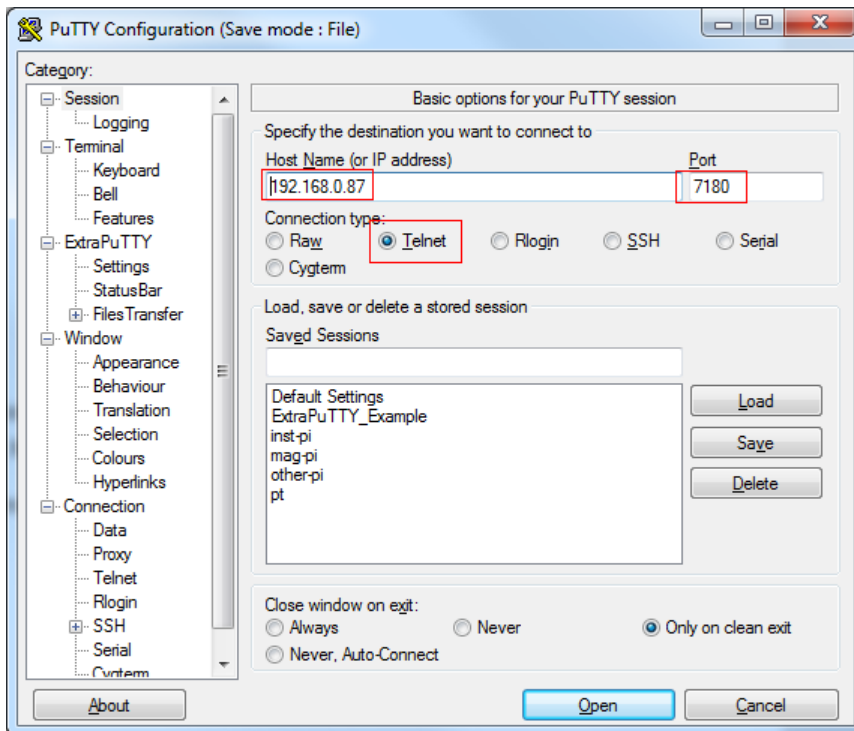
## Hung Update Workaround

Occasionally, updating the firmware may encounter an error and hang. A hung update prevents the update program from being able to try again. If you encounter this situation, here is the workaround.

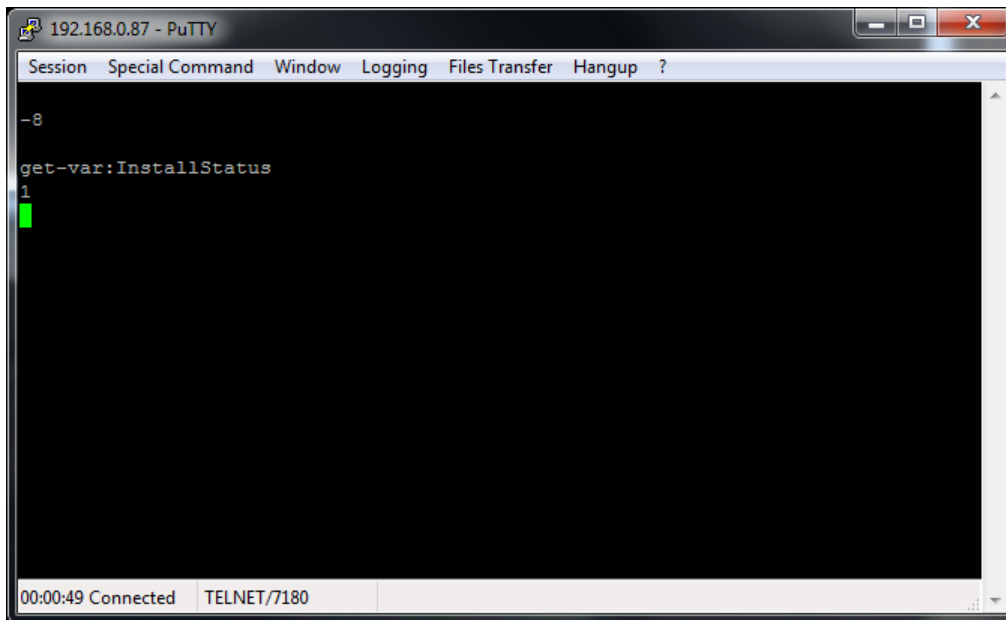
- If the display has been stuck for more than a minute press CANCEL.



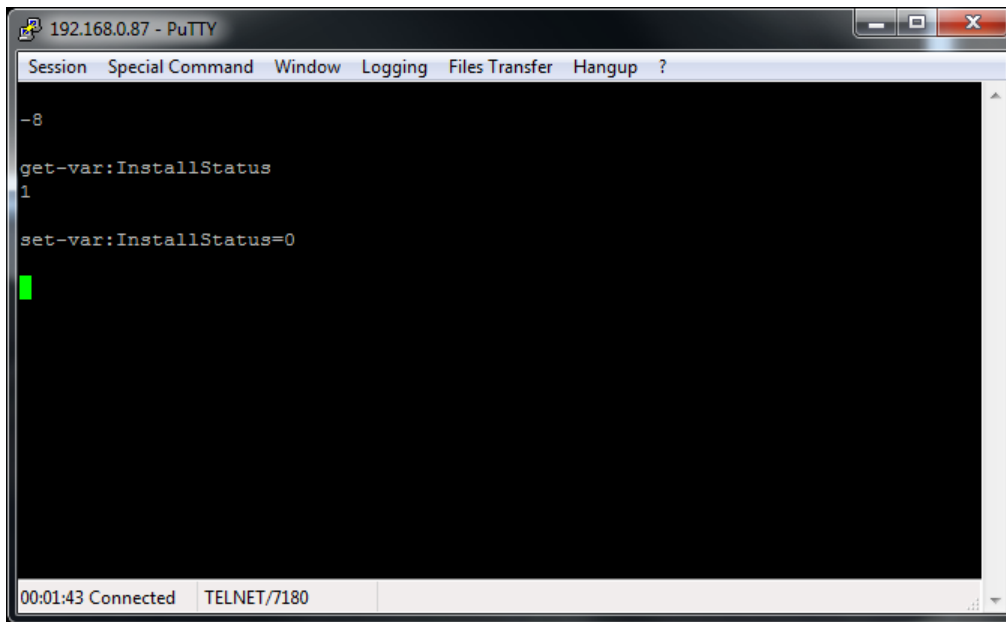
- Using PuTTY or similar terminal emulator, Telnet to the unit's IP on port 7180.



- Enter the command (case-sensitive): `get-var:InstallStatus`  
This should return a 1 if the unit has a stuck upgrade.



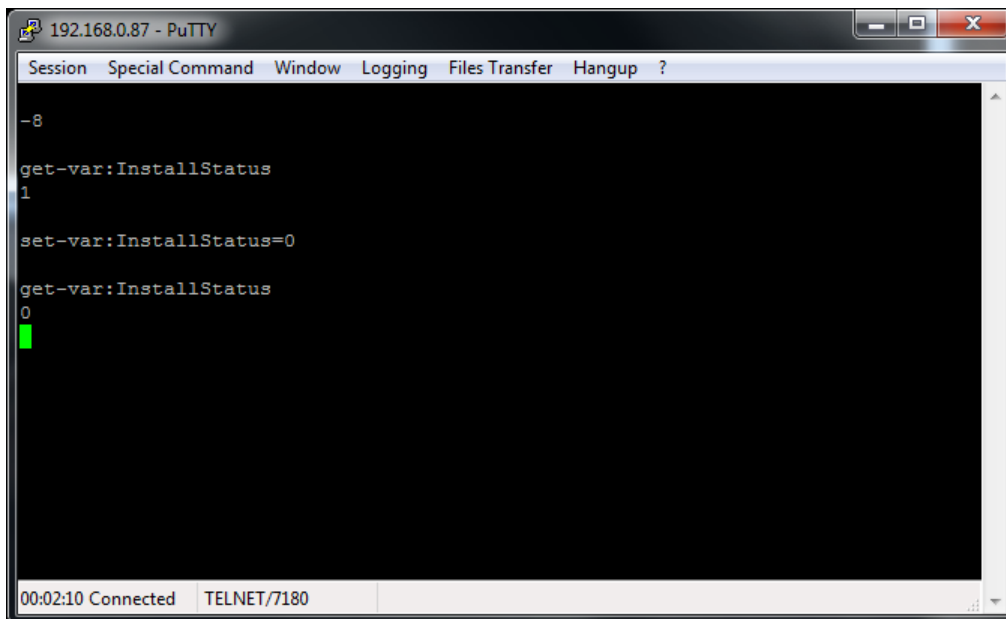
5. Enter the command (case-sensitive): `set-var:InstallStatus=0`



```
192.168.0.87 - PuTTY
Session Special Command Window Logging Files Transfer Hangup ?
-8
get-var:InstallStatus
1
set-var:InstallStatus=0
█
```

00:01:43 Connected TELNET/7180

6. Check that the value was set with the command (case-sensitive): `get-var:InstallStatus`  
It should now return a 0.



```
192.168.0.87 - PuTTY
Session Special Command Window Logging Files Transfer Hangup ?
-8
get-var:InstallStatus
1
set-var:InstallStatus=0
get-var:InstallStatus
0
█
```

00:02:10 Connected TELNET/7180

7. Disconnect PuTTY. You may now retry the update.